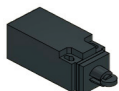


## INTERRUTTORI DI SICUREZZA

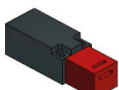
PAG. H1 Finecorsa sicurezza  
ad asta a tutta molla



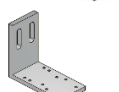
PAG. H2 Finecorsa sicurezza  
pistoncino con rotella



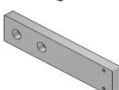
PAG. H2 Finecorsa sicurezza



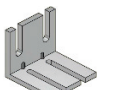
PAG. H3 Porta micro perimetrale  
scorrevole



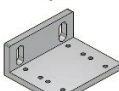
PAG. H3 Porta micro orizzontale



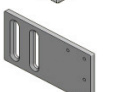
PAG. H4 Porta micro anta battente



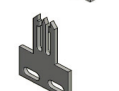
PAG. H4 Porta micro dietro cerniere



PAG. H5 Porta micro perno cerniera



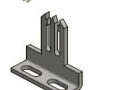
PAG. H6 Chiave dritta



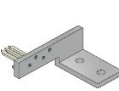
PAG. H6 Supporto chiave omron dritta



PAG. H7 Chiave ad angolo



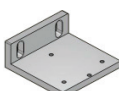
PAG. H7 Porta chiave fissa  
per scorrevole A30-A45



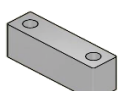
PAG. H8 Chiave snodata



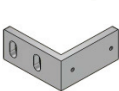
PAG. H8 Porta chiave dietro cerniere



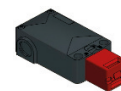
PAG. H9 Spessore chiave A30-60



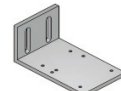
PAG. H9 Porta chiave  
perimetrale scorrevole



PAG. H10 Finecorsa magnetico  
ad azionamento separato



PAG. H11 Porta micro universale



PAG. H11 Porta micro universale  
perimetrale battente



PAG. H12 Chiave elettromagnetico  
piatto



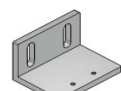
PAG. H12 Chiave elettromagnetico  
ad angolo



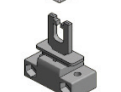
PAG. H13 Chiave elettromagnetico  
doppio snodo



PAG. H13 porta chiave  
per micro elettromagnetico

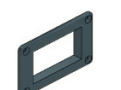


PAG. H14 Chiave VF KYFB\_A08

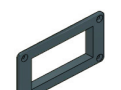


## COMPONENTI ELETTRICI

PAG. H15 Cestello a 3 posizioni



PAG. H15 Cestello a 4 posizioni



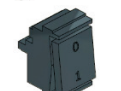
PAG. H16 Placchetta a 3 posizioni



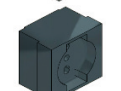
PAG. H16 Placchetta a 4 posizioni



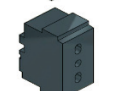
PAG. H17 Interruttore bipolare



PAG. H17 Presa universale SCHUCO



PAG. H18 Presa universale

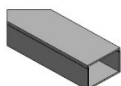


# MATERIALE ELETTRICO E PNEUMATICO

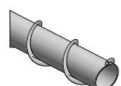
PAG. H18 Tappo cestello



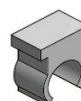
PAG. H19 Canalina 17x25



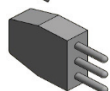
PAG. H19 Guaina Flessibile



PAG. H20 Clip fissaggio guaina



PAG. H20 Spina piatta



PAG. H21 Pressacavo per cavo



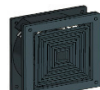
PAG. H21 Pressacavo per guaina



PAG. H22 Ciabatta multipresa



PAG. H23 KIT Ricircolo aria



PAG. H23 Ventola D200



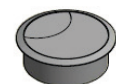
PAG. H24 Maschera per filtro



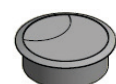
PAG. H24 Griglia metallica



PAG. H25 Passacavo



PAG. H25 Passacavo



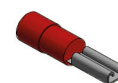
PAG. H26 Cavo G3x1,5



PAG. H26 Cavo G2x1



PAG. H27 Morsetto per cavi femmina



PAG. H27 Morsetto cavi a occhiello



PAG. H28 Guaina termoresistente



PAG. H28 Blocchetto adesivo per fascette



PAG. H29 Lampada Led



PAG. H29 Dimmer



## COMPONENTI PNEUMATICI

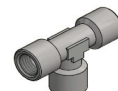
PAG. H30 Rubinetto universale a sfera



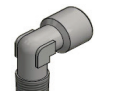
PAG. H30 Innesto rubinetto maschio



PAG. H31 Raccordo femmina a T



PAG. H31 Raccordo maschio femmina a L



PAG. H32 Tappo per raccordo



PAG. H32 Tubo Rilsan



PAG. H33 Raccordo intermedio a L

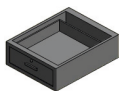


PAG. H33 Raccordo maschio cil

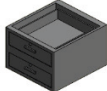


## CASSETTIERA

PAG. H34 Cassetto singolo



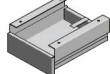
PAG. H34 Cassetto doppio



PAG. H35 Cassetto triplo



PAG. H35 Cassetto piccolo



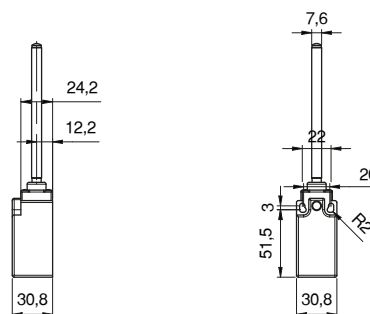
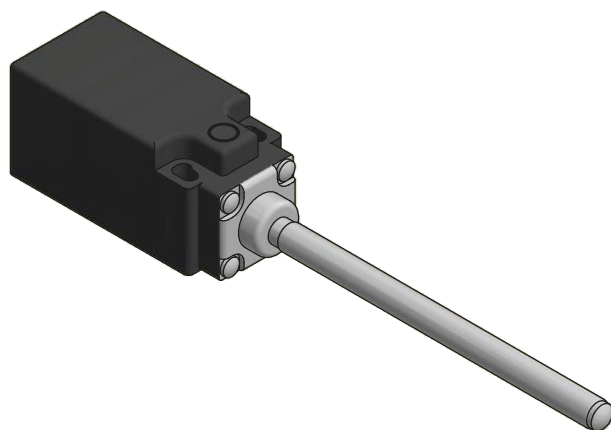
[www.asprotezioni.it](http://www.asprotezioni.it)

# MATERIALE ELETTRICO E PNEUMATICO

**A.S. PROTEZIONI**  
SOLUZIONI TECNICHE IN ALLUMINIO

## Interruttore di Sicurezza

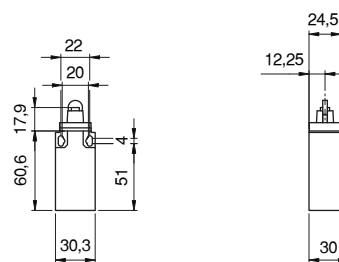
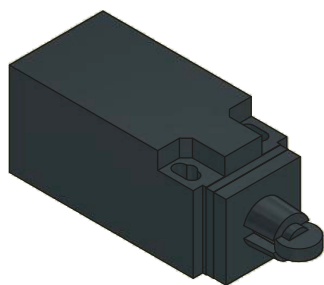
Fincorsa sicurezza ad asta a tutta molla



| CODICE      | TIPOLOGIA             | CARATTERISTICHE | PRESSACAPO |
|-------------|-----------------------|-----------------|------------|
| ME.INTE.002 | Ad asta a tutta molla | 1 NC - 1 NO     | M16x1.5    |

## Interruttore di Sicurezza

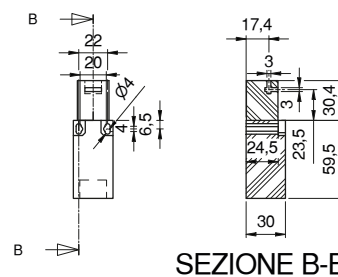
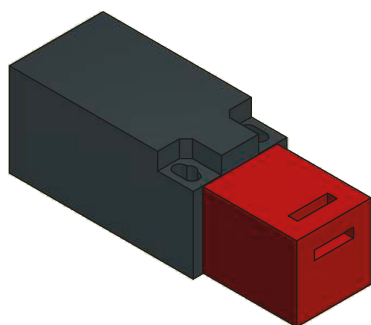
Finecorsa sicurezza pistoncino con rotella



| CODICE      | CARATTERISTICHE | PRESSACAPO |
|-------------|-----------------|------------|
| ME.INTE.003 | 1 NC - 1 NO     | M16x1,5    |

## Interruttore di Sicurezza

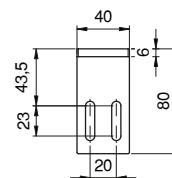
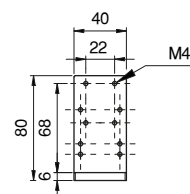
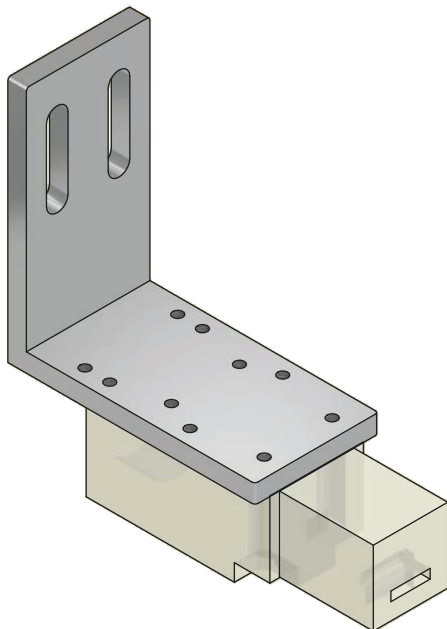
Finecorsa di Sicurezza



| CODICE      | CARATTERISTICHE | PRESSACAPO |
|-------------|-----------------|------------|
| ME.INTE.006 | 2 NC            | M16x1,5    |

## Interruttore di Sicurezza

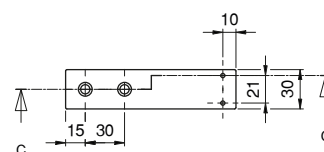
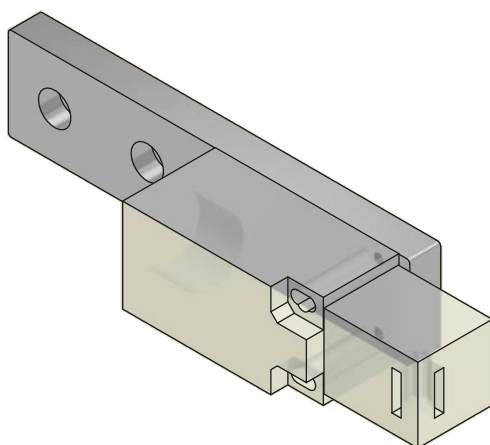
Porta micro perimetrale scorrevole



| CODICE      | MATERIALE | FINITURA   |
|-------------|-----------|------------|
| CN.____.018 | Alluminio | Anodizzato |

## Interruttore di Sicurezza

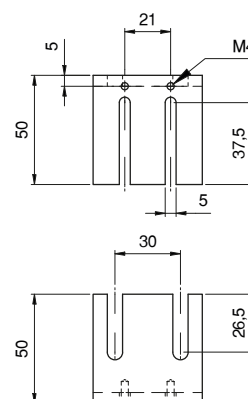
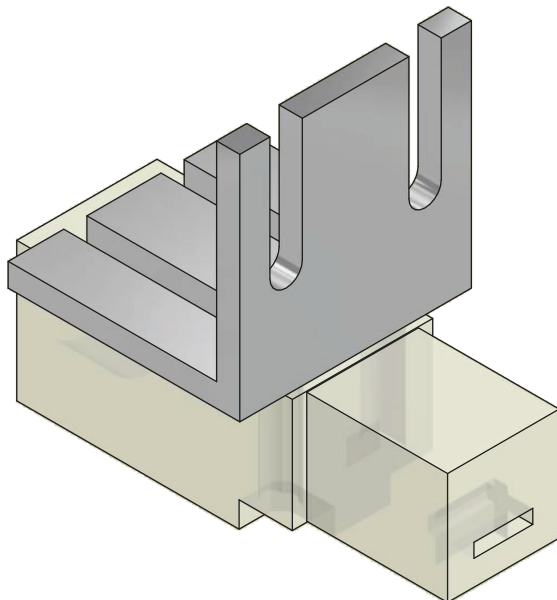
Porta micro orizzontale



| CODICE      | MATERIALE | FINITURA   |
|-------------|-----------|------------|
| CN.____.020 | Alluminio | Anodizzato |

## Interruttore di Sicurezza

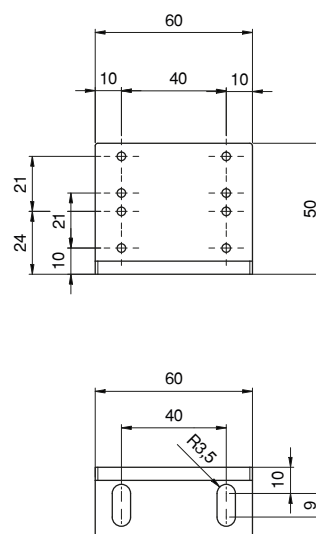
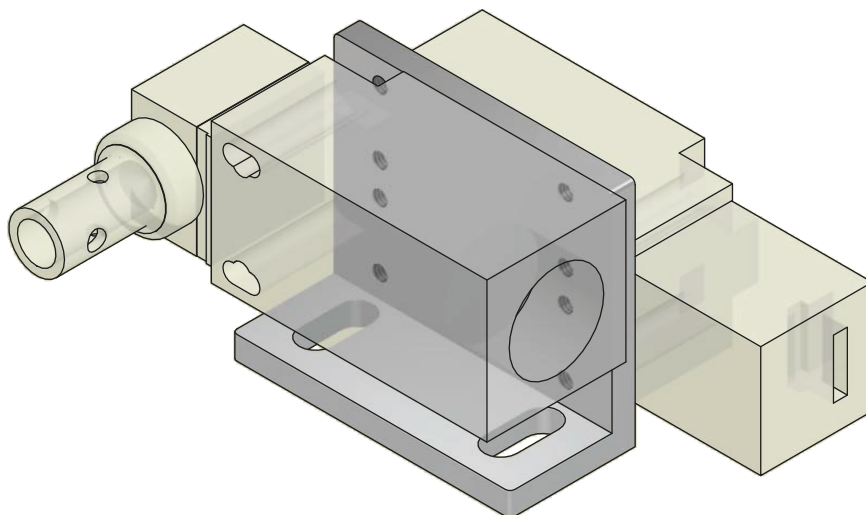
Porta micro anta battente



| CODICE      | MATERIALE | FINITURA   |
|-------------|-----------|------------|
| CN.____.003 | Alluminio | Anodizzato |

## Interruttore di Sicurezza

Porta micro dietro cerniere

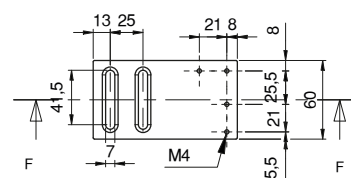
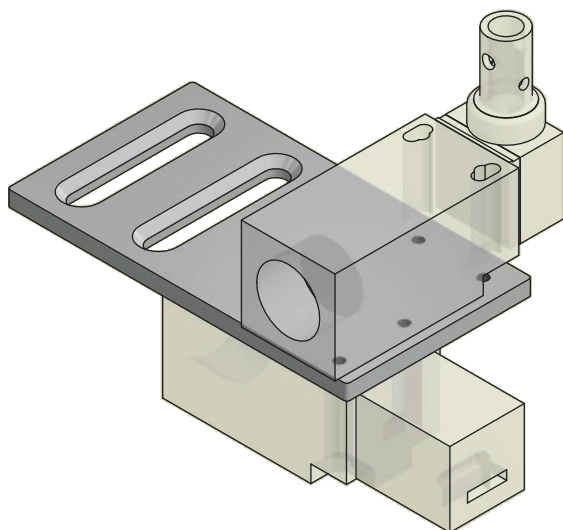


| CODICE      | MATERIALE | FINITURA   |
|-------------|-----------|------------|
| CN.____.016 | Alluminio | Anodizzato |



## Interruttore di Sicurezza

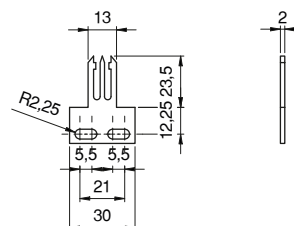
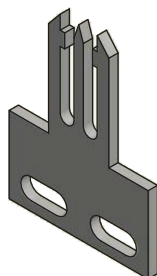
Porta micro perno cerniera



| CODICE      | MATERIALE | FINITURA   |
|-------------|-----------|------------|
| CN.____.009 | Alluminio | anodizzato |

## Interruttore di Sicurezza

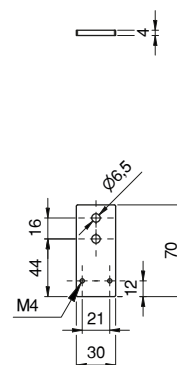
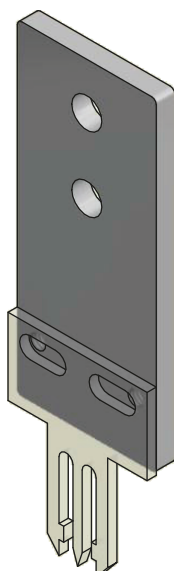
Chiave diritta



| CODICE      | MATERIALE | FINITURA |
|-------------|-----------|----------|
| ME.CHIA.010 | Acciaio   | zincato  |

## Interruttore di Sicurezza

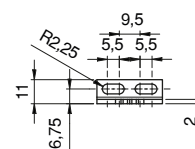
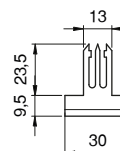
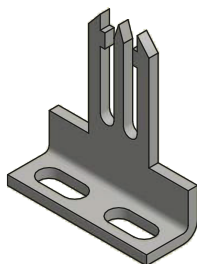
supporto chiave omron diritta



| CODICE      | MATERIALE | FINITURA   |
|-------------|-----------|------------|
| CN.____.019 | Alluminio | Anodizzato |

## Interruttore di Sicurezza

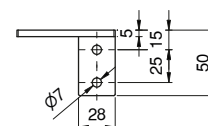
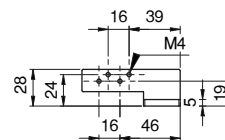
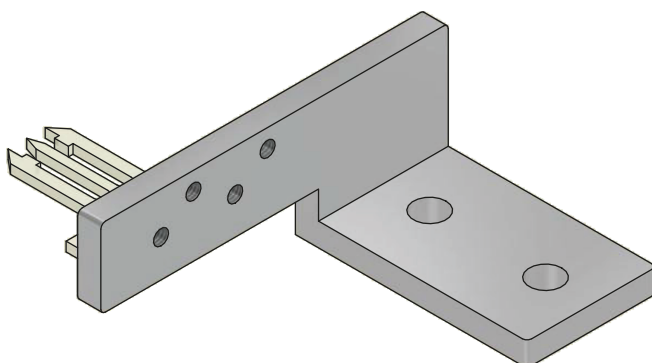
Chiave ad angolo



| CODICE      | MATERIALE | FINITURA |
|-------------|-----------|----------|
| ME.CHIA.011 | Acciaio   | zincato  |

## Interruttore di Sicurezza

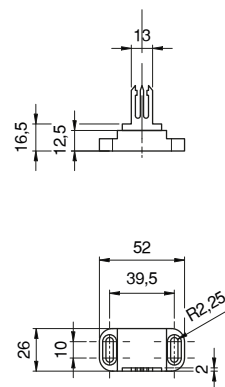
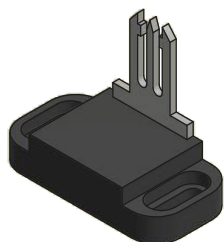
porta chiave fissa x scorevole A30-A45



| CODICE      | MATERIALE | FINITURA   |
|-------------|-----------|------------|
| CN.____.023 | Alluminio | Anodizzato |

## Interruttore di Sicurezza

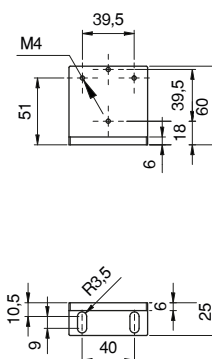
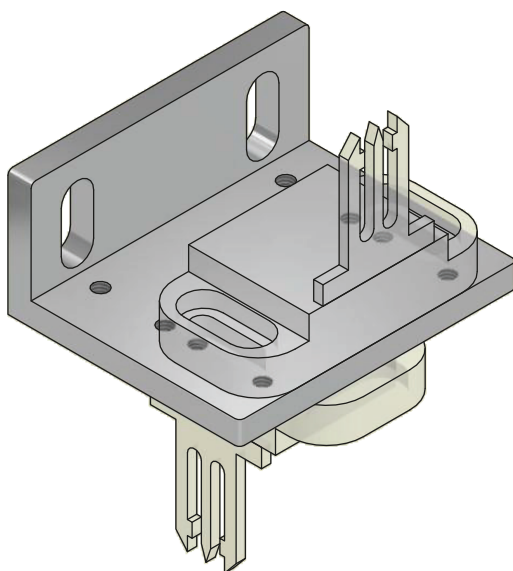
Chiave snodata



| CODICE      | MATERIALE | FINITURA |
|-------------|-----------|----------|
| ME.CHIA.013 | Acciaio   | zincato  |

## Interruttore di Sicurezza

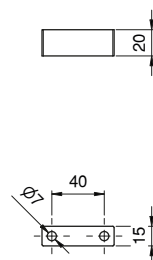
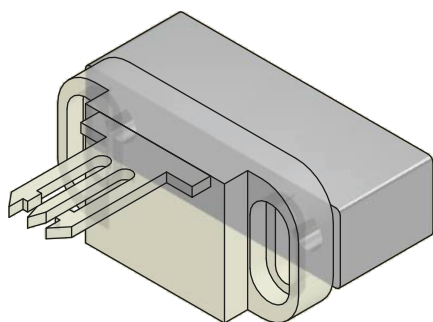
Porta chiave dietro cerniere



| CODICE      | MATERIALE | FINITURA   |
|-------------|-----------|------------|
| CN.____.015 | Alluminio | Anodizzato |

## Interruttore di Sicurezza

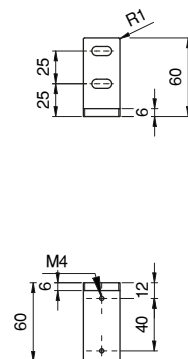
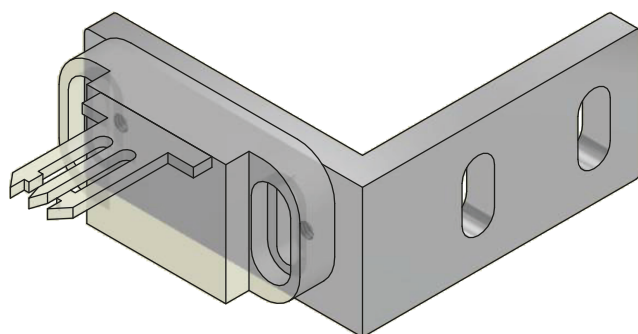
Spessore chiave A30-60



| CODICE      | MATERIALE | FINITURA   |
|-------------|-----------|------------|
| CN.____.005 | Alluminio | Anodizzato |

## Interruttore di Sicurezza

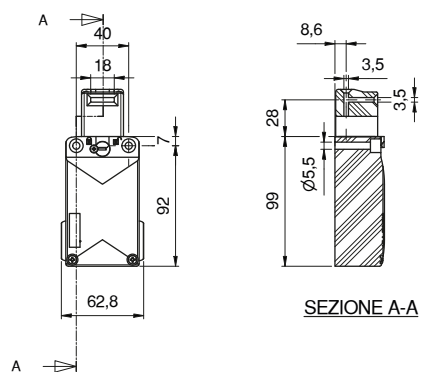
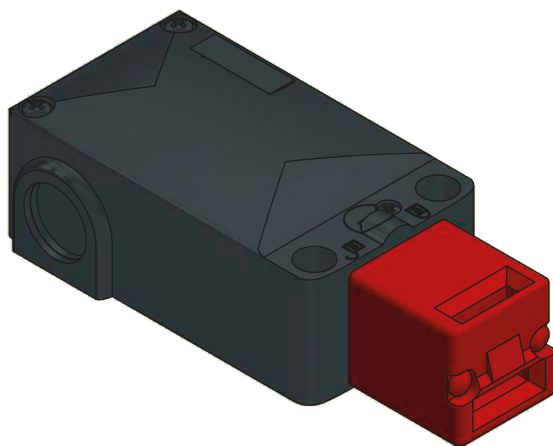
Porta chiave perimetrale scorrevole



| CODICE      | MATERIALE | FINITURA   |
|-------------|-----------|------------|
| CN.____.012 | Alluminio | Anodizzato |

## Interruttore di Sicurezza

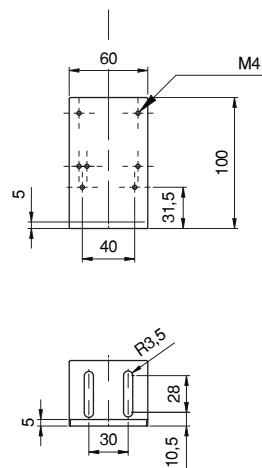
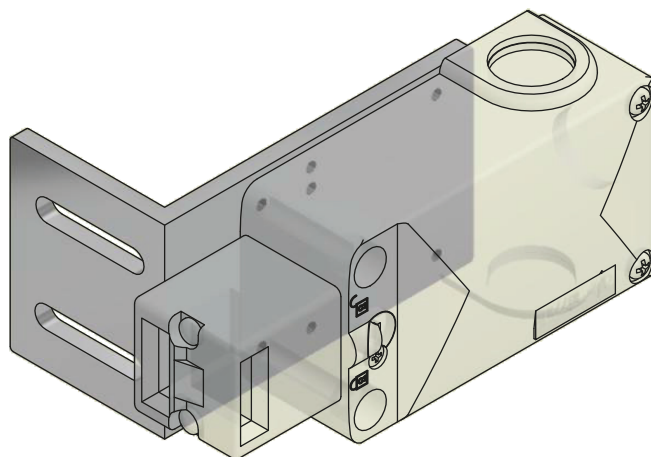
Fincorsa elettromagnetico ad azionamento separato



| CODICE      | CARATTERISTICHE | PRESSACAVO |
|-------------|-----------------|------------|
| ME.INTE.007 | 3 NC            | M16x1.5    |

## Interruttore di Sicurezza

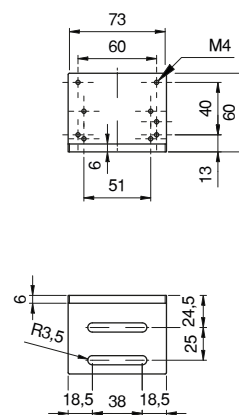
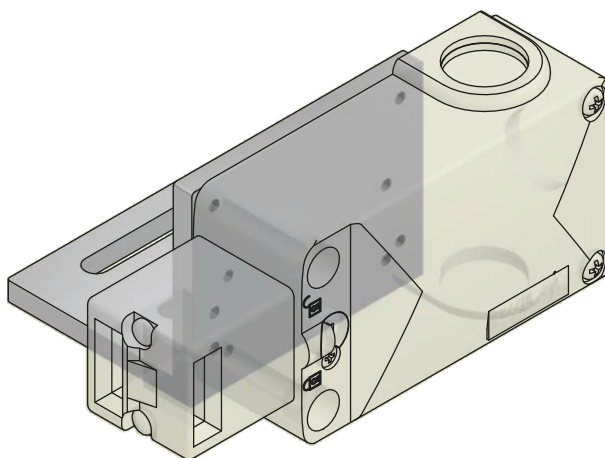
Porta micro universale



| CODICE      | MATERIALE | FINITURA   |
|-------------|-----------|------------|
| CN.____.007 | Alluminio | Anodizzato |

## Interruttore di Sicurezza

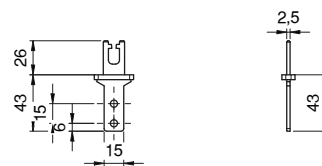
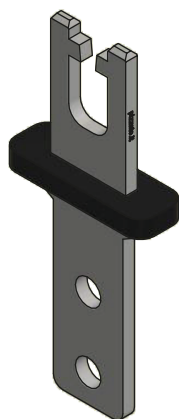
Portra micro universale perimentrale battente



| CODICE      | MATERIALE | FINITURA   |
|-------------|-----------|------------|
| CN.____.008 | Alluminio | Anodizzato |

## Interruttore di Sicurezza

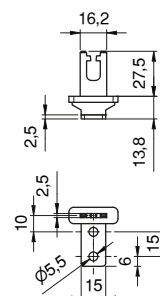
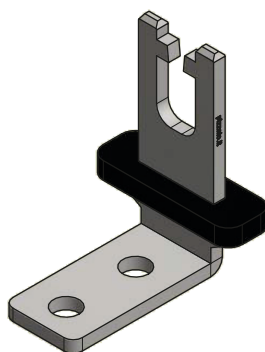
Chiave Elettromagnetico piatto



| CODICE      | MATERIALE | FINITURA |
|-------------|-----------|----------|
| ME.CHIA.001 | Acciaio   | zincato  |

## Interruttore di Sicurezza

Chiave Elettromagnetico ad angolo

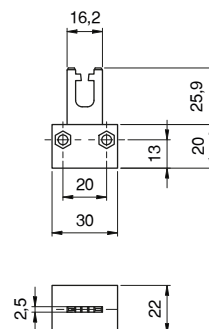
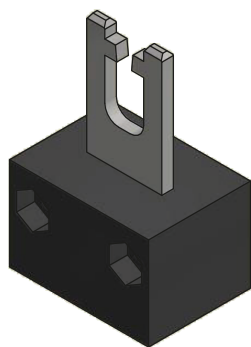


| CODICE      | MATERIALE | FINITURA |
|-------------|-----------|----------|
| ME.CHIA.002 | Acciaio   | zincato  |



## Interruttore di Sicurezza

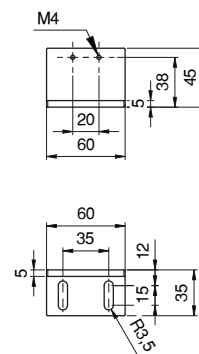
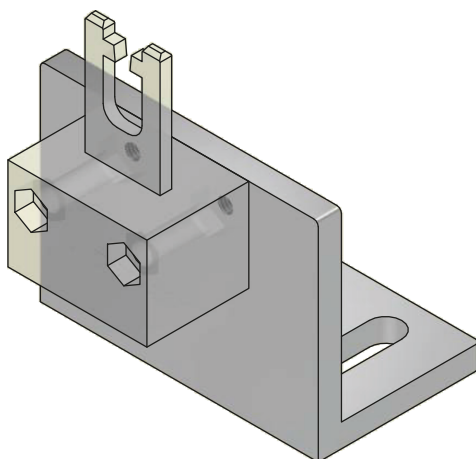
Chiave Elettromagnetico doppio snodo



| CODICE      | MATERIALE | FINITURA |
|-------------|-----------|----------|
| ME.CHIA.003 | Acciaio   | zincato  |

## Interruttore di Sicurezza

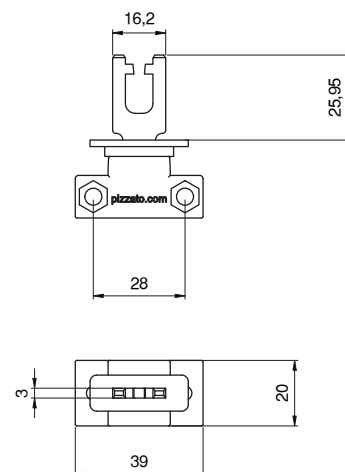
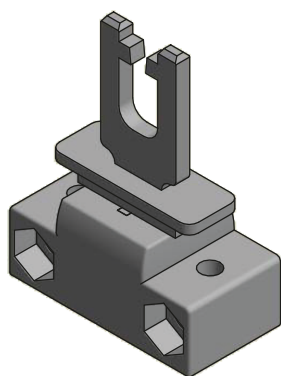
Porta chiave per micro elettromagnetico



| CODICE      | MATERIALE | FINITURA   |
|-------------|-----------|------------|
| CN.____.024 | Alluminio | Anodizzato |

## Interruttore di Sicurezza

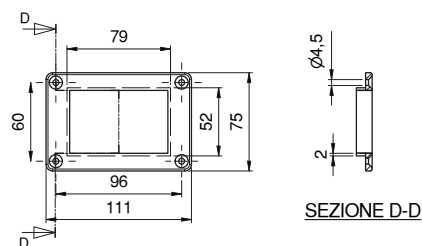
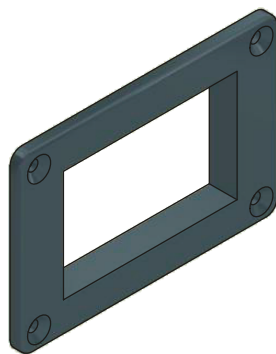
Chiave VF\_KEYFB\_A08



| CODICE      | MATERIALE | FINITURA |
|-------------|-----------|----------|
| ME.CHIA.101 | Acciaio   | Zincato  |

## Componenti Elettrici

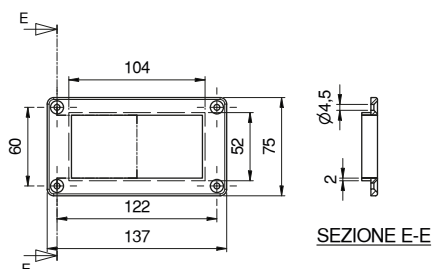
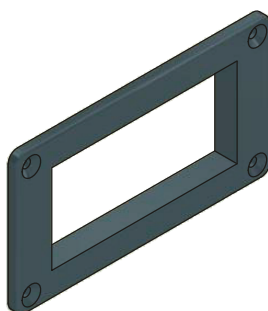
Cestello a 3 Posizioni



| CODICE      | MATERIALE | FINITURA |
|-------------|-----------|----------|
| AC.COMP.030 | PVC       | nero     |

## Componenti Elettrici

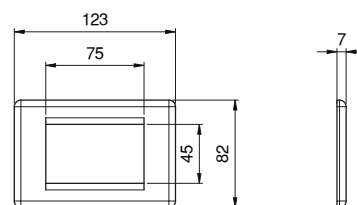
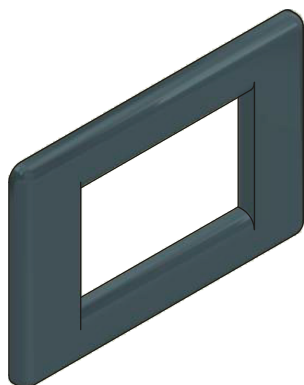
Cestello a 4 Posizioni



| CODICE      | MATERIALE | FINITURA |
|-------------|-----------|----------|
| AC.COMP.031 | PVC       | nero     |

## Componenti Elettrici

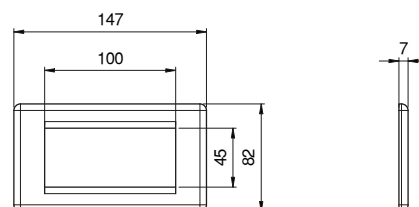
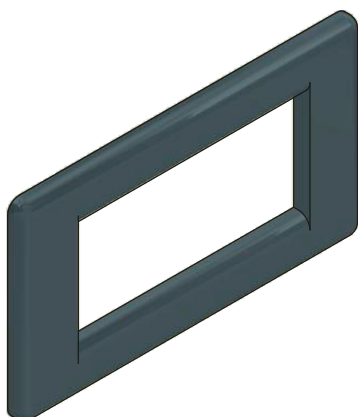
Placchetta a 3 Posizioni



| CODICE      | MATERIALE | FINITURA |
|-------------|-----------|----------|
| AC.COMP.032 | PVC       | nero     |

## Componenti Elettrici

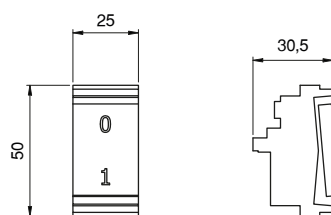
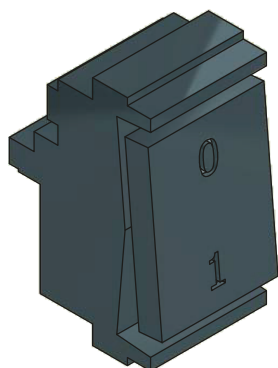
Placchetta a 4 Posizioni



| CODICE      | MATERIALE | FINITURA |
|-------------|-----------|----------|
| AC.COMP.033 | PVC       | nero     |

## Componenti Elettrici

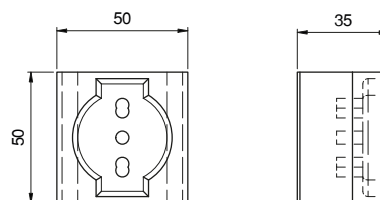
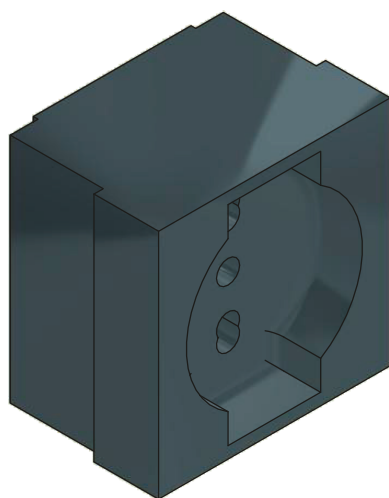
Interruttore bipolare



| CODICE      | MATERIALE | FINITURA |
|-------------|-----------|----------|
| AC.COMP.002 | PVC       | nero     |

## Componenti Elettrici

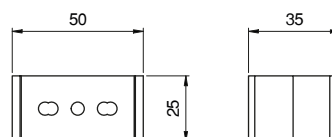
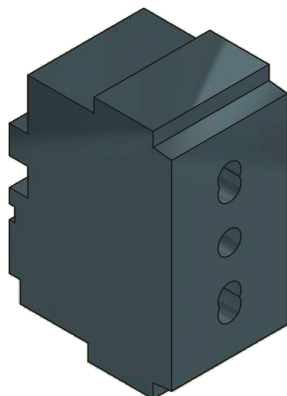
presa universale SCHUKO



| CODICE      | MATERIALE | FINITURA |
|-------------|-----------|----------|
| AC.COMP.003 | PVC       | nero     |

## Componenti Elettrici

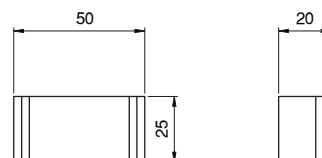
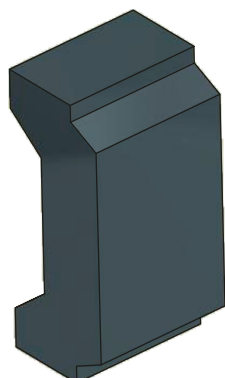
Presca Universale



| CODICE      | MATERIALE | FINITURA |
|-------------|-----------|----------|
| AC.COMP.004 | PVC       | nero     |

## Componenti Elettrici

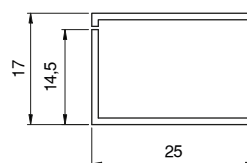
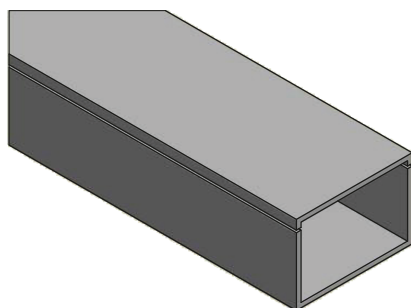
Tappo Cestello



| CODICE      | MATERIALE | FINITURA |
|-------------|-----------|----------|
| AC.COMP.011 | PVC       | nero     |

## Componenti Elettrici

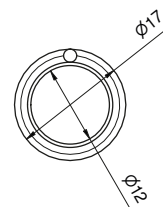
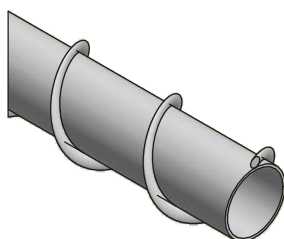
Canalina 17x25



| CODICE      | LUNGHEZZA mm | MATERIALE | FINITURA |
|-------------|--------------|-----------|----------|
| AC.COMP.009 | 2000         | PVC       | bianco   |

## Componenti Elettrici

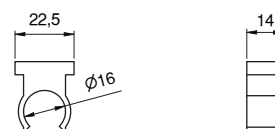
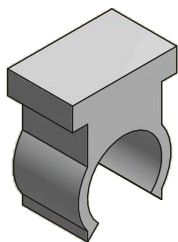
Guaina Flessibile



| CODICE      | LUNGHEZZA mm | MATERIALE | FINITURA |
|-------------|--------------|-----------|----------|
| AC.COMP.006 | 30000        | PVC       | bianco   |

## Componenti Elettrici

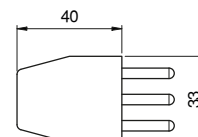
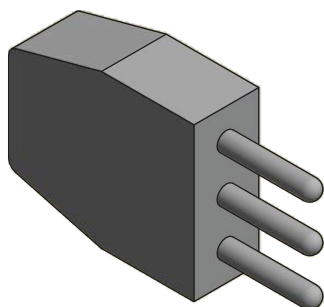
Clip Fissaggio guaina



| CODICE      | MATERIALE | FINITURA |
|-------------|-----------|----------|
| AC.COMP.007 | PVC       | Bianco   |

## Componenti Elettrici

Spina Piatta

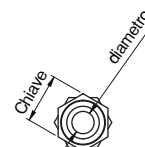
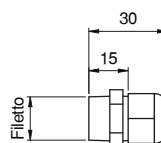
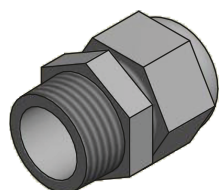


| CODICE      | MATERIALE | FINITURA |
|-------------|-----------|----------|
| AC.COMP.008 |           | Nero     |



## Componenti Elettrici

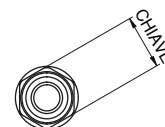
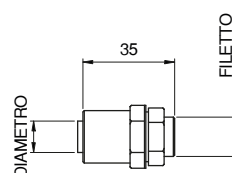
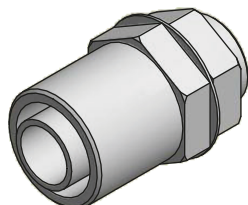
Pressacavo per cavo



| CODICE      | MATERIALE | FINITURA | FILETTO | DIAMETRO | CHIAVE S |
|-------------|-----------|----------|---------|----------|----------|
| AC.COMP.014 | PVC       | Bianco   | M16x1.5 | 4-10mm   | 19       |

## Componenti Elettrici

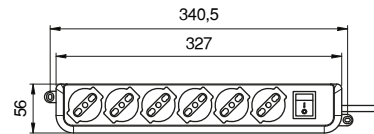
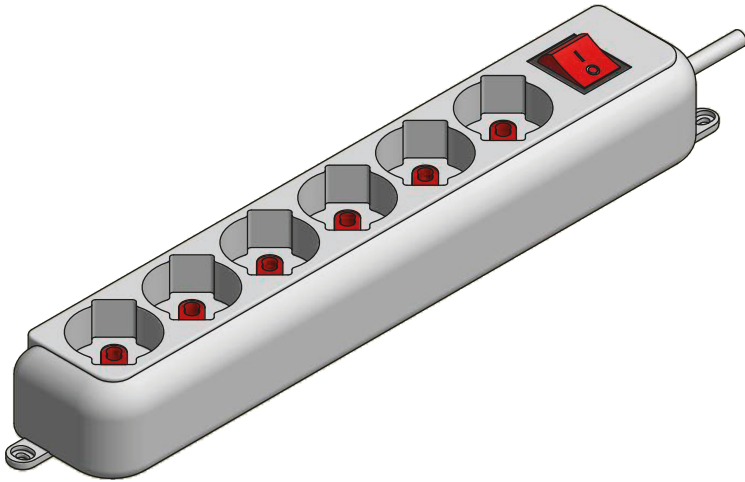
Pressacavo per guaina



| CODICE      | MATERIALE | FINITURA | DIAMETRO | FILETTO | CHIAVE |
|-------------|-----------|----------|----------|---------|--------|
| AC.COMP.015 | PVC       | bianco   | 12       | M16X1.5 | 22     |
| AC.COMP.016 | PVC       | bianco   | 12       | PG13.5  | 22     |

## Componenti Elettrici

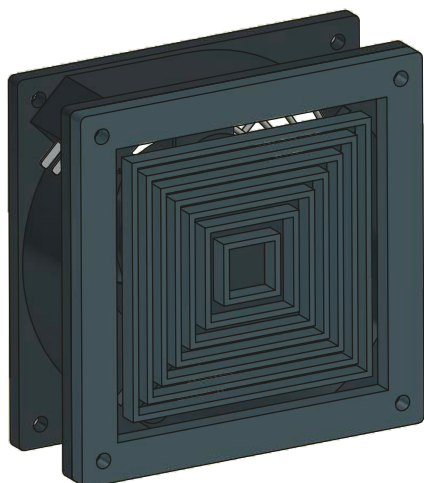
Ciabatta Multipresa



| CODICE      | MATERIALE | FINITURA |
|-------------|-----------|----------|
| AC.COMP.001 | PVC       | bianco   |

## Componenti elettrici

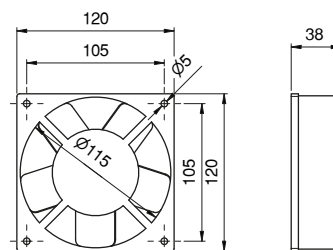
KIT Ricircolo aria



| CODICE    | MATERIALE | FINITURA |
|-----------|-----------|----------|
| L.060.040 | Acciaio   | Nero     |

## Componenti elettrici

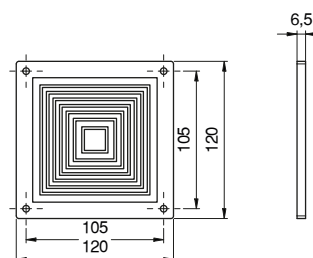
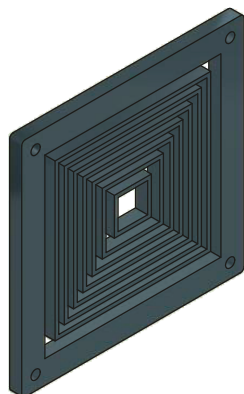
Ventola D120



| CODICE      | MATERIALE | FINITURA |
|-------------|-----------|----------|
| AC.COMP.020 | Acciaio   | nero     |

## Componenti Elettrici

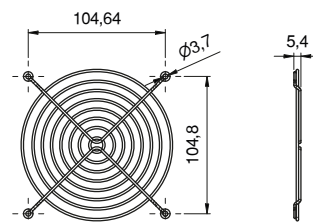
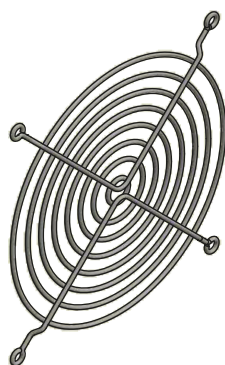
Maschera per Filtro



| CODICE      | MATERIALE | FINITURA |
|-------------|-----------|----------|
| AC.COMP.021 | PVC       | nero     |

## Componenti Elettrici

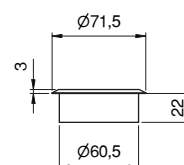
Griglia Metallica



| CODICE      | MATERIALE | FINITURA |
|-------------|-----------|----------|
| AC.COMP.022 | Acciaio   | zincato  |

## Componenti Elettrici

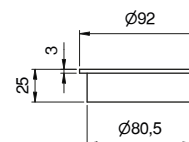
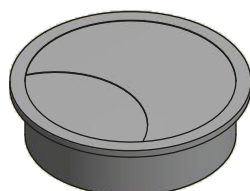
Passacavo



| CODICE      | MATERIALE | FINITURA |
|-------------|-----------|----------|
| AC.COMP.027 | PVC       | grigio   |

## Componenti Elettrici

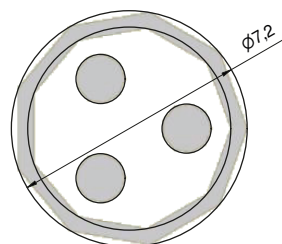
Passacavo



| CODICE      | MATERIALE | FINITURA |
|-------------|-----------|----------|
| AC.COMP.028 | PVC       | grigio   |

## Componenti Elettrici

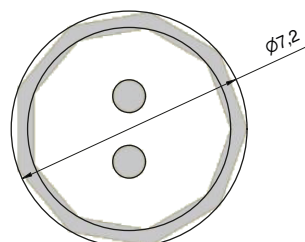
Cavo G3x1.5



| CODICE      | MATERIALE | FINITURA |
|-------------|-----------|----------|
| AC.COMP.005 | PVC       | bianco   |

## Componenti Elettrici

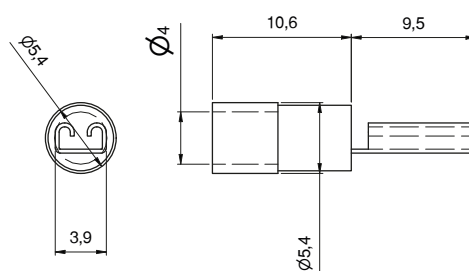
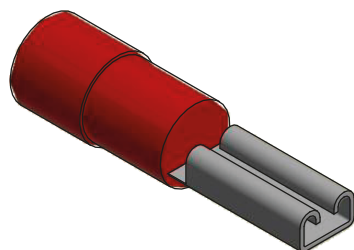
Cavo G2X1



| CODICE      | MATERIALE | FINITURA |
|-------------|-----------|----------|
| AC.COMP.010 | PVC       | bianco   |

## Componenti Elettrici

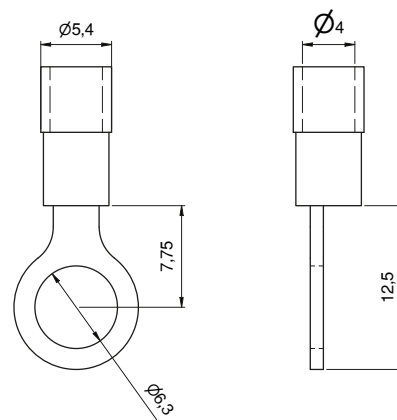
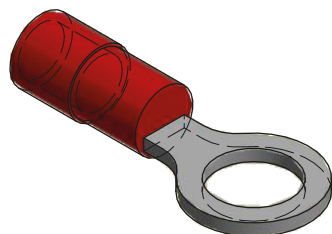
Morsetto per cavi femmina



| CODICE      | MATERIALE | ISOLANTE |
|-------------|-----------|----------|
| AC.COMP.101 | Rame      | PA       |

## Componenti Elettrici

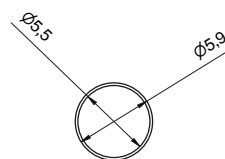
Morsetto cavi a occhiello



| CODICE      | MATERIALE | ISOLANTE |
|-------------|-----------|----------|
| AC.COMP.102 | Rame      | PA       |

## Componenti elettrici

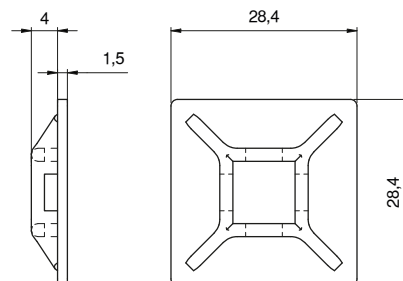
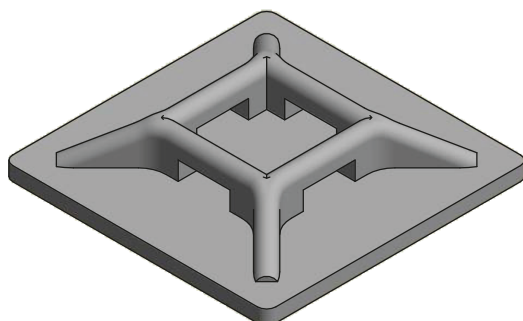
Guaina termorestringente



| CODICE      | MATERIALE | LUNGHEZZA BOBINA |
|-------------|-----------|------------------|
| AC.COMP.103 | Rame      | 8m               |

## Componenti elettrici

Blocchetto adesivo per fascette

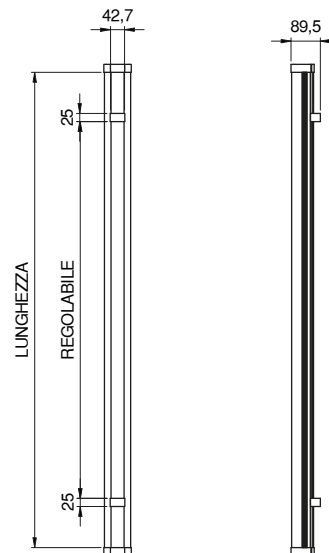


| CODICE      | MATERIALE | FINITURA |
|-------------|-----------|----------|
| AC.COMP.104 | NYLON     | GRIGIO   |



## Componenti Elettrici

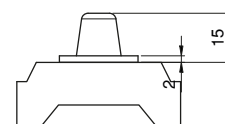
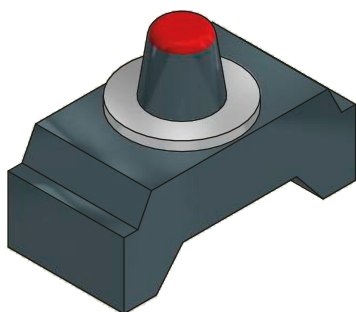
Lampada Led Dimmerabile - Cool white



| CODICE      | LUNGHEZZA mm | Watt | Lumen | PROTEZIONE | TEMPERATURA COLORE |
|-------------|--------------|------|-------|------------|--------------------|
| ME.PLED.030 | 600          | 20   | 1900  | IP 65      | 4000K              |
| ME.PLED.032 | 1500         | 65   | 6175  | IP 65      | 4000K              |

## Componenti Elettrici

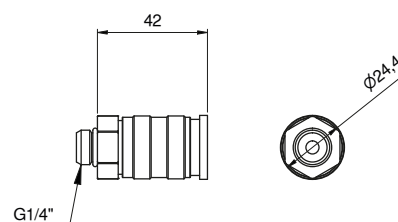
Dimmer



| CODICE      | MATERIALE | FINITURA |
|-------------|-----------|----------|
| AC.COMP.012 | PVC       | Nero     |

## Componenti Pneumatici

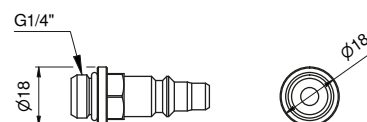
Rubinetto Universale a sfera



| CODICE      | MATERIALE | FINITURA |
|-------------|-----------|----------|
| AC.COMP.040 | Acciaio   | zincato  |

## Componenti Pneumatici

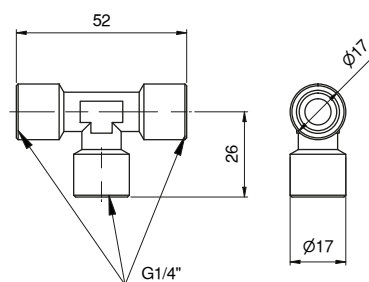
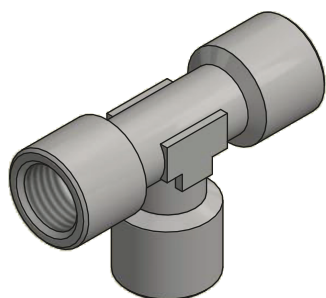
Innesto rubinetto maschio



| CODICE      | MATERIALE | FINITURA |
|-------------|-----------|----------|
| AC.COMP.041 | Acciaio   | zincato  |

## Componenti Pneumatici

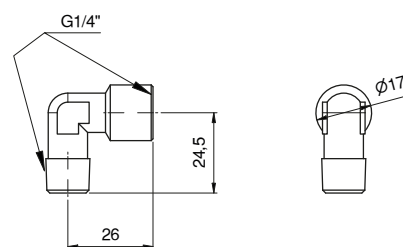
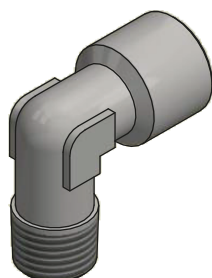
Raccordo Femmina a T



| CODICE      | MATERIALE | FINITURA |
|-------------|-----------|----------|
| AC.COMP.042 | Acciaio   | zincato  |

## Componenti Pneumatici

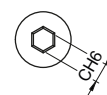
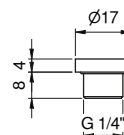
Raccordo Maschio/Femmina a L



| CODICE      | MATERIALE | FINITURA |
|-------------|-----------|----------|
| AC.COMP.043 | Acciaio   | zincato  |

## Componenti Pneumatici

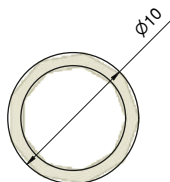
Tappo per Raccordo



| CODICE      | MATERIALE | FINITURA |
|-------------|-----------|----------|
| AC.COMP.049 | Acciaio   | zincato  |

## Componenti Pneumatici

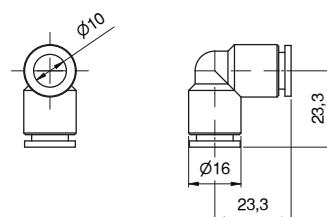
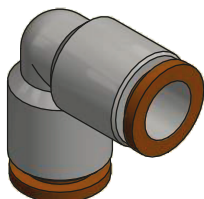
Tubo Rilsan Flessibile D8X10



| CODICE      | LUNGHEZZA mm | MATERIALE | FINITURA    |
|-------------|--------------|-----------|-------------|
| AC.COMP.046 | 100000       | PVC       | trasparente |

## Componenti Pneumatici

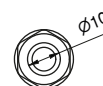
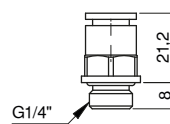
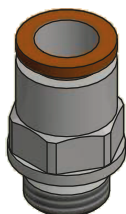
Raccordo Intermedio a L R4



| CODICE      | MATERIALE | FINITURA |
|-------------|-----------|----------|
| AC.COMP.044 | Acciaio   | zincato  |

## Componenti Pneumatici

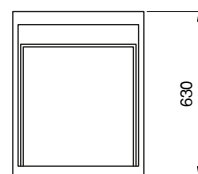
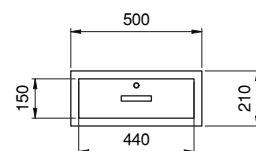
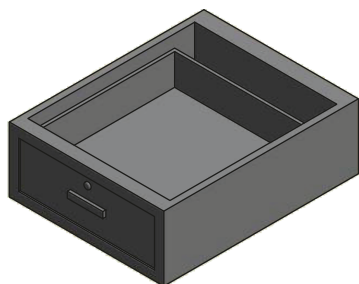
Raccordo Maschio Cil R1



| CODICE      | MATERIALE | FINITURA |
|-------------|-----------|----------|
| AC.COMP.045 | Acciaio   | zincato  |

## Cassettiera

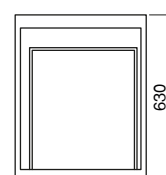
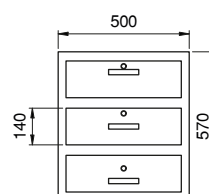
Cassetto Singolo



| CODICE      | MATERIALE | FINITURA |
|-------------|-----------|----------|
| AC.CASS.001 | Acciaio   | grigio   |

## Cassettiera

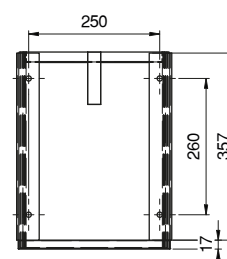
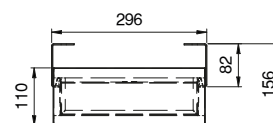
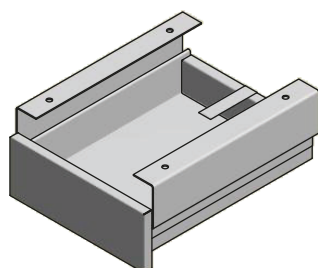
Cassetto Triplo



| CODICE      | MATERIALE | FINITURA |
|-------------|-----------|----------|
| AC.CASS.003 | Acciaio   | grigio   |

## Cassettiera

Cassetto Piccolo



| CODICE      | MATERIALE | FINITURA |
|-------------|-----------|----------|
| AC.CASS.004 | Acciaio   | Beige    |







A.S. Protezioni s.r.l. - Via Provinciale, 3/i  
25050 Rodengo Saiano (Brescia)  
Tel. 030 610011 - Fax 0306811918 - [info@asprotezioni.it](mailto:info@asprotezioni.it)  
[www.asprotezioni.it](http://www.asprotezioni.it)